

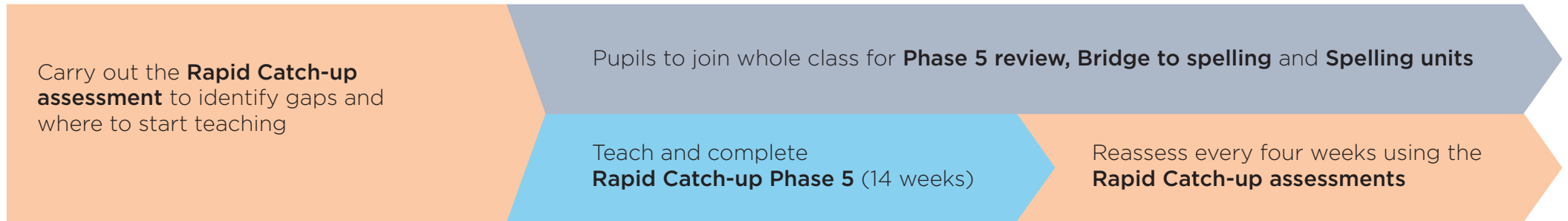
# Year 2 pathways: From phonics to spelling

This document gives advice about choosing the right pathway for children in Year 2, whether this means completing the Little Wandle core programme, following Rapid Catch-up or moving on to Little Wandle Spelling.

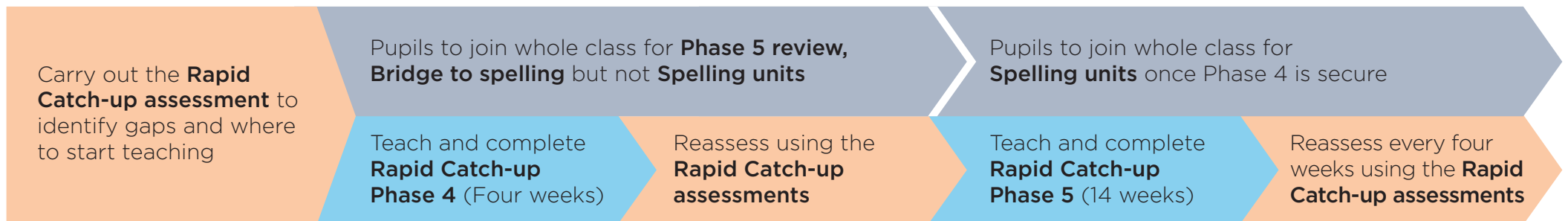
## Pupils on track (green in all Year 1 assessments)



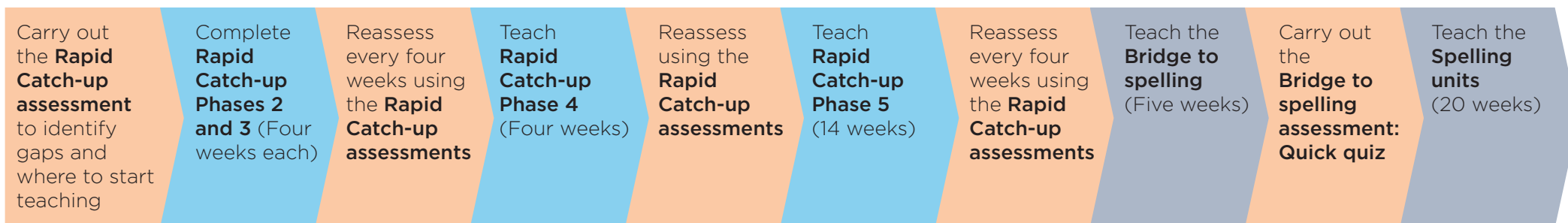
## Pupils with gaps (working at Phase 5)



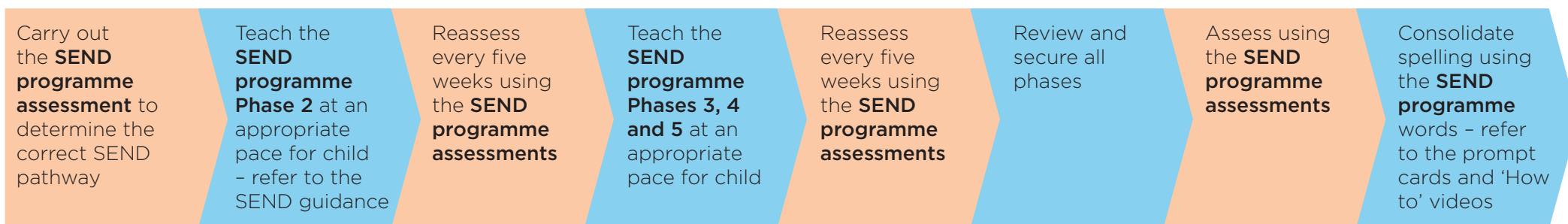
## Pupils with gaps (working at Phase 4)



## Pupils with larger gaps (working at Phase 2 or 3 and blending)



## Pupils with larger gaps (working at Phase 2 or 3 and not blending)\*

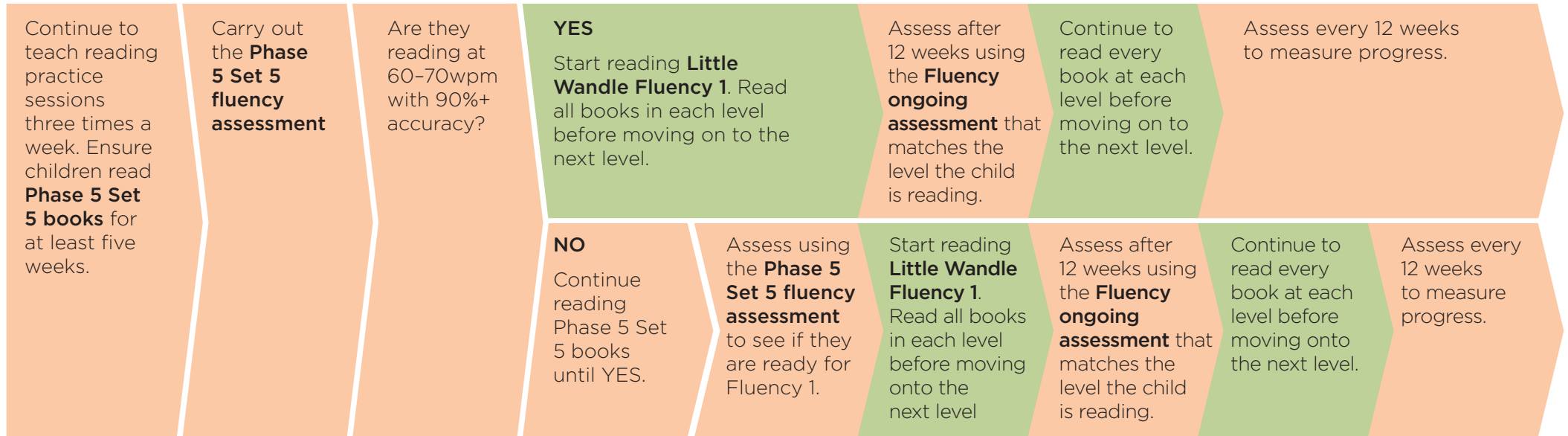


\*The SEND programme is for children with a significant SEND that affects cognition. If a child is unable to blend because they are new to English or have EAL, teach Rapid Catch-up Phase 2 but slow down the pace of teaching and use the Phase 2 additional blending practice to suit the child's needs.

# Year 2 pathways: From phonics to fluency

This document gives advice about choosing the right reading pathway for children in Year 2 according to their phonic knowledge and fluency.

## Pupils reading Phase 5 Set 5 books



## Pupils reading Phase 2 to Phase 5 Set 4 books

Continue to teach **reading practice sessions** three times a week. Use the assessments to match the children's secure phonic knowledge to the right level book.

**From Phase 5 Set 3:** Children should read each book set for at least five weeks from this point.

Assess every four weeks using the matching core programme assessments.

**From Phase 5 Set 3:** Also use the core programme fluency assessments

Have the children been reading Phase 5 Set 5 books for at least five weeks?

**AND**

Are they reading at 60-70wpm with 90%+ accuracy

**YES**

Start reading **Little Wandle Fluency 1**. Read all books in each level before moving on to the next level.

Assess after 12 weeks using the **Fluency ongoing assessment** that matches the level the child is reading.

Continue to read every book at each level before moving on to the next level.

Assess every 12 weeks to measure progress.

**NO**

Continue reading practice until **YES**.

Assess using the **Phase 5 Set 5 fluency assessment** to see if they are ready for Fluency 1.

Start reading **Little Wandle Fluency 1**. Read all books in each level before moving on to the next level

Assess after 12 weeks using the **Fluency ongoing assessment** that matches the level the child is reading.

Continue to read every book at each level before moving on to the next level.

Assess every 12 weeks to measure progress.